

Subaru 360

Truck & Van

Body Section Manual

Fuji Heavy Industries, Ltd.

FOREWORD

This service manual has been prepared as reference for effective service and maintenance of the body for Subaru 360 Truck and Subaru 360 Van.

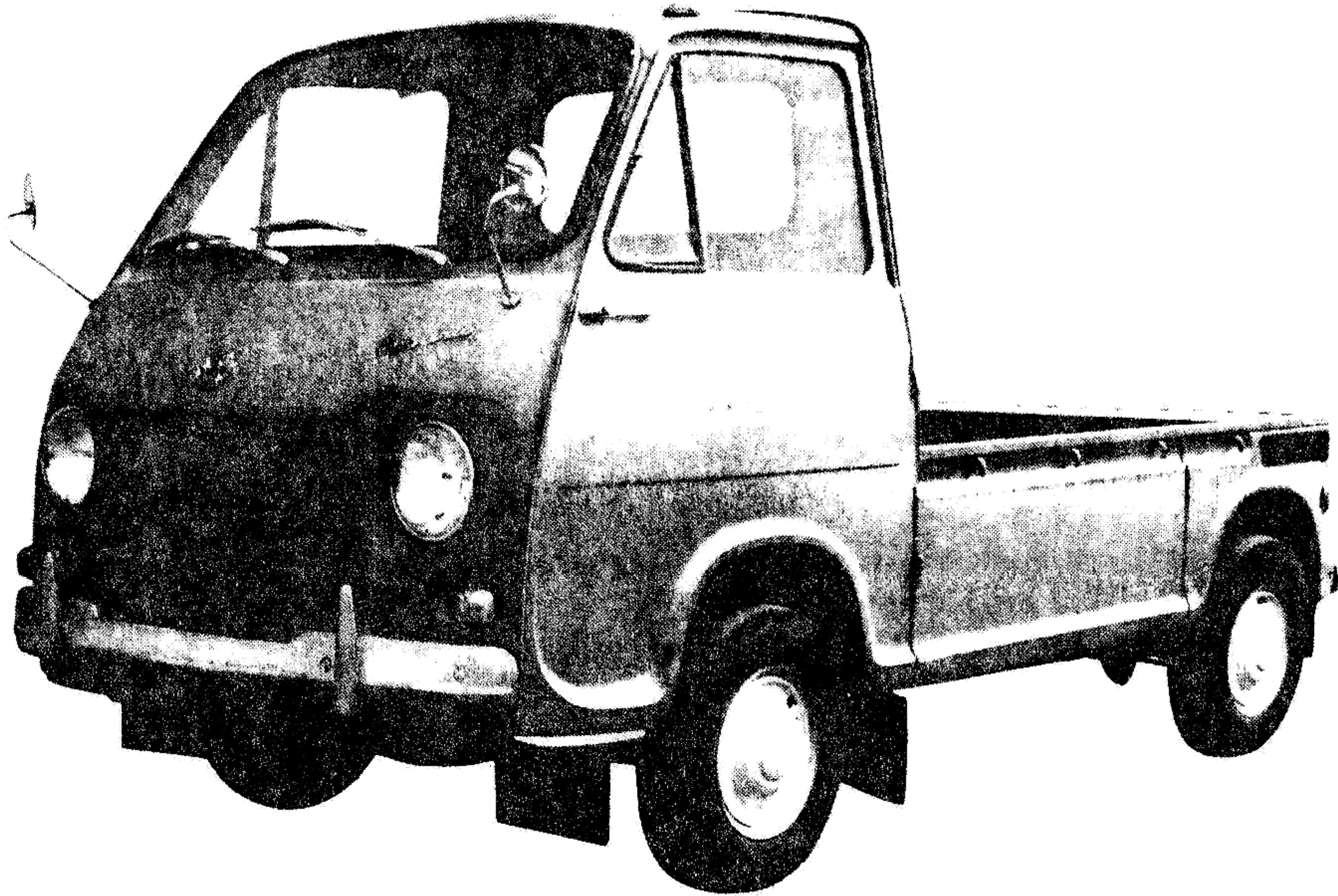
Please utilize this manual fully to ensure complete maintenance work for satisfying our customers by keeping their vehicles in the best condition.

(For information on the engine, please refer to the "Service Manual - Engine Section".)

When it is necessary to replace parts during maintenance, be sure to use genuine Subaru parts.

EXTERIOR PHOTOGRAPHS

SUBARU 360 TRUCK



SUBARU 360 VAN

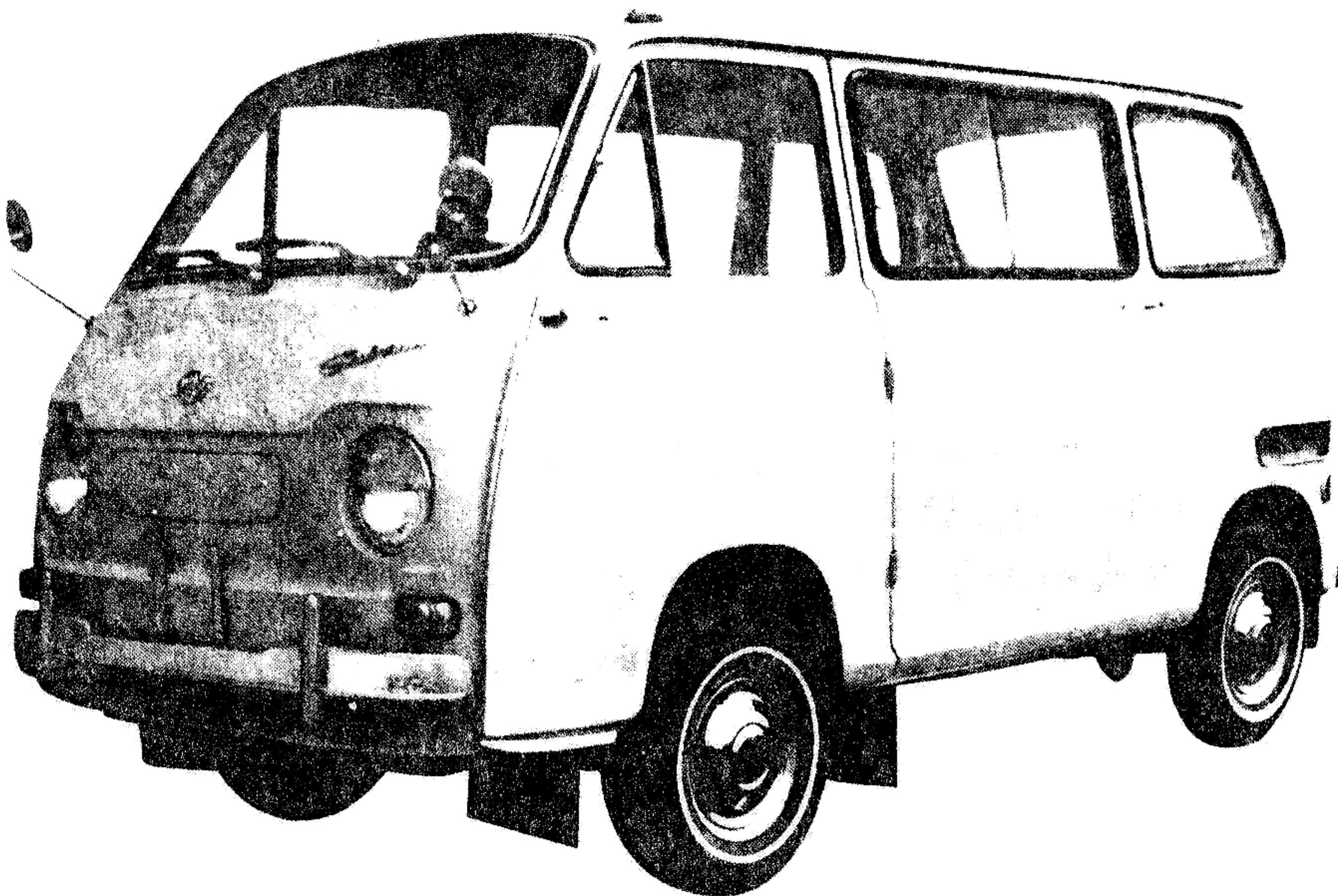


TABLE OF CONTENTS

- CHAPTER 1: SPECIFICATION & PERFORMANCE CURVES
- CHAPTER 2: FRONT END
- CHAPTER 3: REAR END
- CHAPTER 4: STEERING SYSTEM
- CHAPTER 5: BRAKE SYSTEM
- CHAPTER 6: CONTROL SYSTEM & ENGINE ACCESSORIES
- CHAPTER 7: SHOCK ABSORBER
- CHAPTER 8: TIRE
- CHAPTER 9: ELECTRICAL EQUIPMENT
- CHAPTER 10: BODY
- CHAPTER 11: MAINTENANCE STANDARDS

1. MAIN SPECIFICATIONS

	Truck	Van	
MODEL	K153L	K163L	
DIMENSIONS AND WEIGHTS			
Overall length	2,995 mm (117.9 in)	"	
Overall width	1,295 mm (51.0 in)	"	
Overall height	1,545 mm (60.8 in)	1,535 mm (60.4 in)	
Cargo bed length	1,785 mm (70.3 in)	1,515 mm (59.6 in)	
Cargo bed width	1,185 mm (46.7 in)	1,110 mm (43.7 in)	
Cargo bed depth	365 mm (14.4 in)	1,170 mm (46.1 in)	
Cargo bed ground height	355 mm (14.0 in)	355 mm (14.0 in)	
Ground clearance	185 mm (7.3 in)	"	
Wheelbase	1,750 mm (68.9 in)	"	
Tread			
Front	1,120 mm (44.1 in)	"	
Rear	1,080 mm (42.5 in)	"	
Vehicle weight	470 kg (1,035 lb)	550 kg (1,210 lb)	
Load distribution (empty)			
Front	235 kg (507.5 lb)	255 kg (560 lb)	
Rear	235 kg (507.5 lb)	295 kg (650 lb)	
Height of center of gravity	505 mm (19.9 in)	590 mm (23.2 in)	
Maximum tipping angle			
Right side	47°	42°	
Left side	48°	44°	
Number of passengers	2	2	4
Maximum loading capacity	350 kg (770 lb)	300 kg (660 lb)	200 kg (440 lb)
PERFORMANCE			
Maximum speed	95 km/h (60 mph)	"	

	Truck	Van
Minimum fuel consumption (paved level load)	24 km/ℓ (57 mi/USgal)	25 km/ℓ (59 mi/USgal)
Average practical fuel consumption	17 km/ℓ (40 mi/USgal)	18 km/ℓ (42 mi/USgal)
Climbing power	15°	13°
Minimum turning circle	8 m (26.2 ft)	
Braking distance	14.5 m/50 km/h (15.9 yd/31 mph)	
ENGINE		
Model	EK 32	
Type	Forced air-cooled, 2-cylinder, 2-stroke gasoline engine	
Cylinder arrangement	in line	
Combustion chamber	Hemisphere type	
Bore x stroke	61.5 mm x 60 mm (2.42 in x 2.36 in)	
Displacement	356 cc (21.7 cc. in)	
Compression ratio	6.7	
Compression pressure	9.1 kg/cm ² (129.4 lb/in ²) at 300 rpm	
Maximum explosion pressure	25.0 kg/cm ² (355.6 lb/in ²) at 1500 rpm	
Maximum mean effective pressure	6.2 kg/cm ² (88.2 lb/in ²) at 4500 rpm	
Maximum horsepower	25 HP at 5500 rpm	
Maximum torque	3.5 kg-m at 4500 rpm (25.3 lb-ft)	
Minimum fuel consumption with full load	300 gr/HP-hr at 5200 rpm	
Dimensions: Length x Weight x Height	634 x 618 x 476 mm (25.0 x 24.3 x 18.7 in)	
Weight	78.8 kg (173.4 lb)	
Location	Rear	

	Truck	Van
Piston material	High silicon aluminum alloy casting	
Number of piston rings	3 (Pressure Ring)	
Port timing		
Intake port: Open	53° BTDC	
Closed	53° ATDC	
Exhaust port: Open	68° BBDC	
Closed	68° ABDC	
Starting	Starter Motor	
IGNITION SYSTEM		
Ignition timing	13° BTDC at 2,000 rpm	
Firing order	1 - 2	
Ignition coil	HITACHI 51504-1100	
Distributor	HITACHI D-203	
Ignition advance control	Automatic centrifugal	
Spark plug	NGK B7H	
Spark plug size	14 mm	
Spark plug gap	0.7 mm (0.0276 in)	
FUEL SYSTEM		
Carburetor		
Type & quantity	HITACHI SOLEX (Side Draft) HAB28, 1 ea	
Air cleaner		
Type & quantity	Oil wet type paper filter, 1 ea	
Fuel pump	Diaphragm Type	
Fuel tank capacity	30ℓ (8.0 USgal)	
LUBRICATION SYSTEM		
Type	Separate-force-feeding type	
Oil pump	Plunger type	
Oil tank capacity	2.5ℓ (2.6 USqt)	

	Truck	Van
BATTERY		
Model & quantity	YUASA 12N24-3	
Voltage & capacity	12 V, 26 AH	
GENERATOR		
Model	NIPPON DENSO 27000-116	
Performance	12 V, 200 W	
Voltage regulator	NIPPON DENSO 26000-108	
STARTER MOTOR		
Model	HITACHI S108	
Performance	12 V, 0.8 HP	
TRANSMISSION SYSTEM		
Clutch	Dry single plate type	
Primary reduction gear	Helical gear	
Primary reduction gear ratio	1.605	
Transmission	3-speed forward with 2nd, 3rd and 4th in synchromesh; 1-speed reverse	
Transmission gear ratio	Low : 3.130 2nd : 1.601 3rd : 1.000 4th : 0.806 Reverse : 4.248	
Amount of transmission oil	1.6ℓ (3.4 USpt)	
Final reduction gear	Helical gear	
Final reduction gear ratio	4.188	3.882
Differential case	Separate type	
Differential gear	Bevel gear	

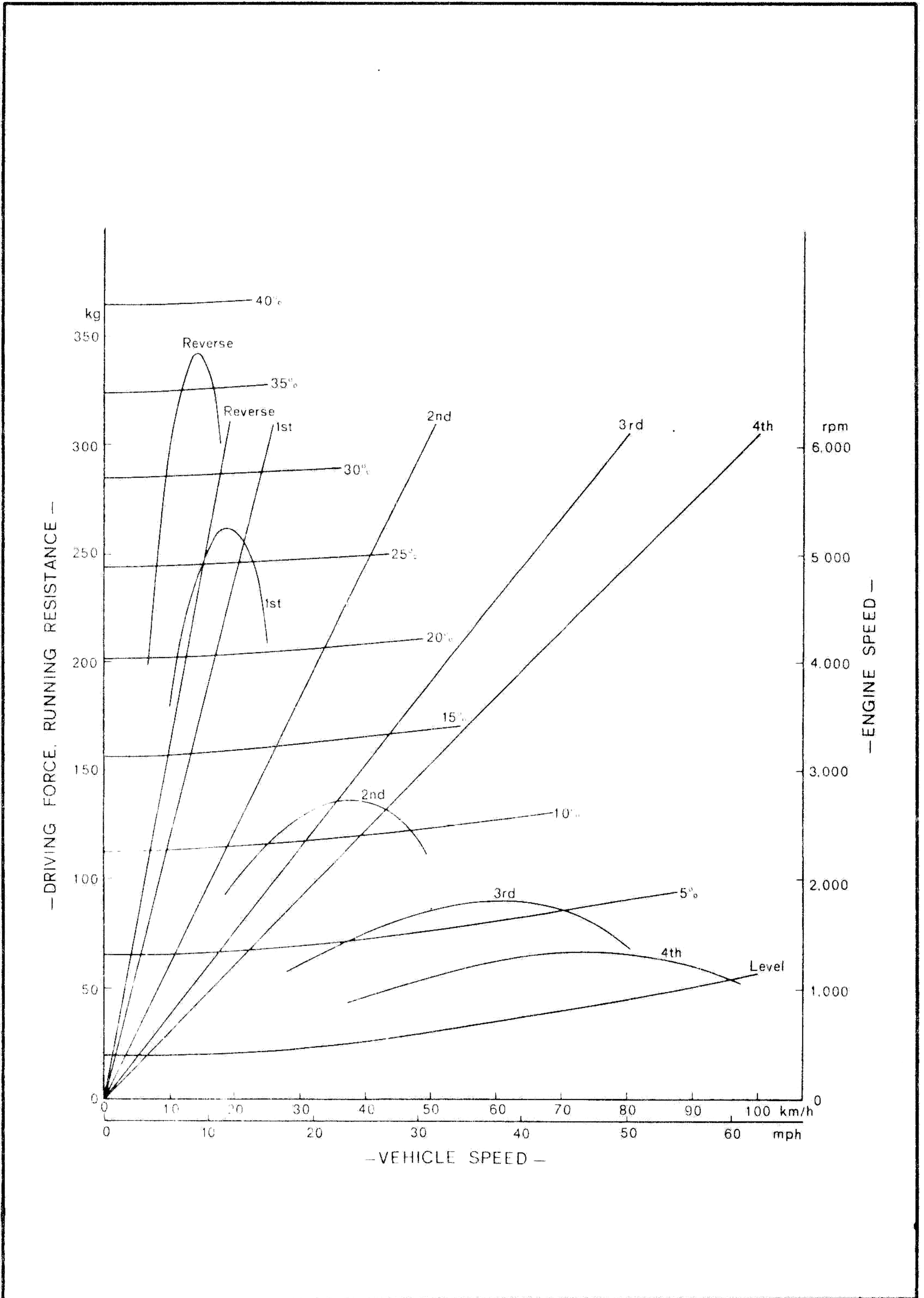
	Truck	Van
STEERING SYSTEM		
Steering gear type	Rack and pinion type	
Steering gear ratio	22.5	
Steering angle : Inner	29° - 33°	
: Outer	27° - 31°	
Steering wheel diameter	380 mm (15 in)	
WHEEL & WHEEL AXLE		
Wheels	2 each in front and rear	
Front wheel axle	Trailing arm type	
Toe-in	12 - 17 mm (0.47 - 0.67 in)	
Camber	1°30' - 2°30'	
Caster	13°10'	
Trail	100 mm (3.94 in)	
Kingpin angle	7°	
Rear wheel axle	Swing axle type	
Tire (front & rear)	4.50-10-4PR	
Tire pressure:		
Front & rear	1.9 - 2.0 gk/cm ² (27.0 - 28.4 lb/in ²)	
Spare	2.0 kg/cm ² (28.4 lb/in ²)	
BRAKE SYSTEM		
Service brake	Hydraulic on all four wheels	
Type : Front	Two-leading type	
: Rear	Leading and trailing type	
Brake lining area: Front	218 cm ² (33.8 in ²)	
: Rear	216 cm ² (33.5 in ²)	
Brake drum diameter:		
Front	170 mm (6.69 in)	
Rear	170 mm (6.69 in)	
Master cylinder inner diameter	19.05 mm (3/4 in)	

	Truck	Van
Wheel cylinder inner diameter: Front Rear	23.81 mm (15/16 in) 15.87 mm (5/8 in)	
Maximum hydraulic pressure	100 kg/cm ² (1422 lb/in ²)	
Hand brake	Mechanical on rear wheels	
SUSPENSION		
Front suspension	Independent suspension	
Front spring	Torsion bar with hydraulic shock absorber	
Front torsion bar (dia x length)	19.5 mm x 500 mm (0.77 in x 19.69 in)	
Rear suspension	Independent suspension	
Rear spring	Torsion bar with hydraulic shock absorber	
Rear torsion bar (dia x length)	20.5 mm x 435 mm (0.81 in x 17.12 in)	
Shock absorber (front & rear)	Hydraulic double action	
FRAME		
Type	Ladder type	
LIGHTING EQUIPMENT		
Headlamp	12 V - 50/40 W x 2 ea	
Front turn signal & clearance lamp	12 V - 23/7 W x 2 ea	
Front side marker lamp	12 V - 3 W x 2 ea	
Rear turn signal, tail & stop lamp	12 V - 23/7 W x 2 ea	
License plate lamp	12 V - 8 W x 1 ea	
Compartment lamp	12 V - 5 W x 1 ea	

	Truck	Van
MISCELLANEOUS		
Horn	Miniature turbine type	
Rear view mirror	Round type x 2 ea	
Windshield wiper	2-speed	
Speedometer	Magnet type	
Fuel gauge	Bi-metal type	

2. PERFORMANCE CURVES

(A) SUBARU 360 TRUCK



(B) SUBARU 360 VAN

